

PICMG 1.3 无源底板

选型指南

 PAC 系列 wall-mount 机箱

 4U/5U Rack-mount 机箱

 1U/2U Rack-mount 机箱

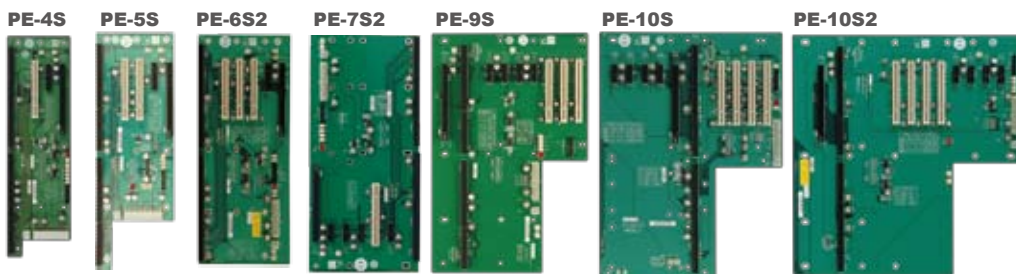
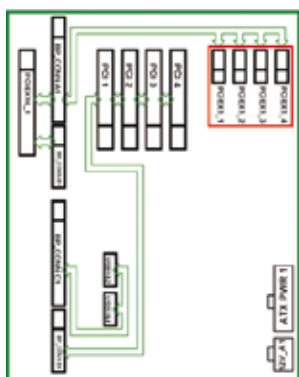
PICMG1.3 (PCIe+PCI)	型号	PE-2SD1	PE-2SD2	PE-4S	PE-4S2	PE-4S3	PE-5S	PE-5S2	PE-6S	PE-6S2	PE-6S3	PE-6SD	PE-6SD2	PE-6SD3
总插槽		2	2	4	4	4	5	5	6	6	6	5	5	5
扩展插槽	PCIe 插槽	x16 * 1		1	1	1	1	1	1	1	1	1	1	1
		x4		1			1		1	1				1
		x1												
	PCI-X 插槽					2		3	2		3	3	2	
	PCI 插槽		1	1	2		2		2	3	1		1	2
USB 接口通过 Pin Header		4	4	4	4	4	4	4	4	4	4	4	4	4
PSU 类型		24+4 PIN ATX	24+4 PIN ATX	24+4 PIN ATX	24+4 PIN ATX	24+4 PIN ATX	24+4 PIN ATX	24+4 PIN ATX	24+4 PIN ATX	24+4 PIN ATX	24+4 PIN ATX	24+4 PIN ATX	24+4 PIN ATX	24+4 PIN ATX
机箱		RACK-1150-PE RACP-1151-PE	RACK-1150-PE RACP-1151-PE	N/A	N/A	N/A	RACK-500G	RACK-500G	RACK-305G RACK-360G RACK-3000G PAC-1700G PAC-125	PAC-106G x 1 PAC-107G x 1 PAC-1000G	PAC-106G x 1 PAC-107G x 1 PAC-1000G	N/A	N/A	N/A
备注		1U Type	1U Type									2U Type	2U Type	2U Type

PICMG1.3 (PCIe+PCI)	型号	PE-7S	PE-7S2	PE-8S	PE-9S	PE-10S	PE-10S2	PE-13SD	PE-16SQ	PXE-12S	PXE-13S	PXE-19S	PXE-19S2
总插槽		7	7	8	9	10	10	13	16	12	13	19	19
扩展插槽	PCIe 插槽	x16 * 1	1	1	1	1	1	1/1	1/1/1/1	1	1	1	1
		x4						1/0	1/1/1/1				
		x1	2	4	3	4	4	0/4	0			1	1
	PCI-X 插槽								6		3		
	PCI 插槽	3	1	3	3	4	4	2/2	1/1/1/1	4	8	16	16
USB 接口通过 Pin Header		4	4	4	4	4	4	8	4/4/4/4	4	4	4	4
PSU 类型		24+4 PIN ATX	24+4 PIN ATX	24+4 PIN ATX	24+4 PIN ATX	24+4 PIN ATX	24+4 PIN ATX	三个 20+4 Pin ATX 一个 24+4-pin ATX	24+4 PIN ATX	24+4 PIN ATX	24+4 PIN ATX	24+4 PIN ATX	24+4 PIN ATX
机箱		PAC-1700G	PAC-1700G	PAC-125G	N/A	RACK-305G RACK-360G RACK-3000G	RACK-3000G RACK-305G RACK-360G	RACK-3000G RACK-305G RACK-360G	N/A	RACK-3000G RACK-305G RACK-360G	RACK-3000G RACK-305G RACK-360G	N/A	N/A
备注							双系统底板	四系统底板	PCIe to PCIe Bridge 底板	PCIe to PCI Bridge 底板			

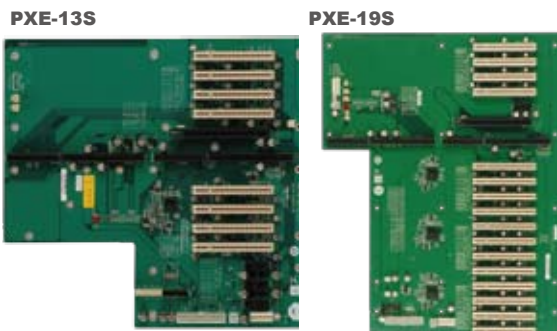
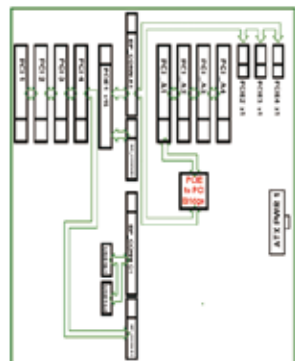
*当使用的 PCIe x16 附加卡时, 全长卡不得超过 167mm 或 6.57 inches.

威强图形等级底板解决方案

考虑到应用中图形中心底板目标系统速度和性能, 性价比上比 PICMG1.0 解决方案要高.



- 总共 20 条 PCIe
- 一个 PCIe x16 插槽
- 达到四个 PCIe x1 或一个 PCIe x4 插槽
- 达到四个局部 PCI 插槽 (w/o Bridge)

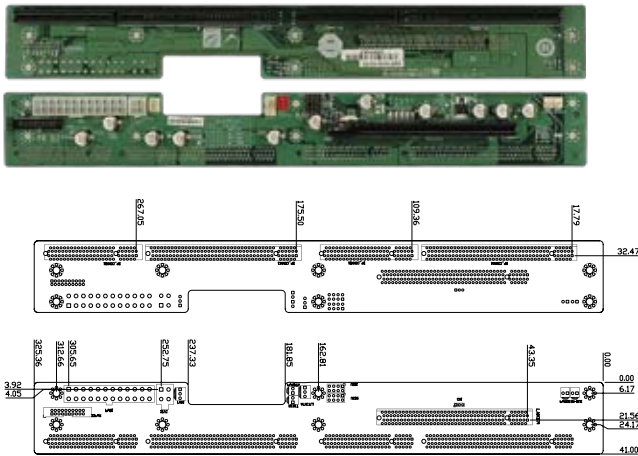


- 总共 20 条 PCIe
- 一个 PCIe x16 插槽
- 达到四个 PCIe x1 插槽
- PCI 插槽可扩展通过 PCIe to PCI Bridge

1 工业电脑解决方案
2 视频采集解决方案
3 嵌入式系统解决方案
4 工业数据采集与控制
5 平板电脑解决方案概览
6 ORing 网络通讯
7 电源与外设

PE-2SD1-R10

支持 1U 系统!

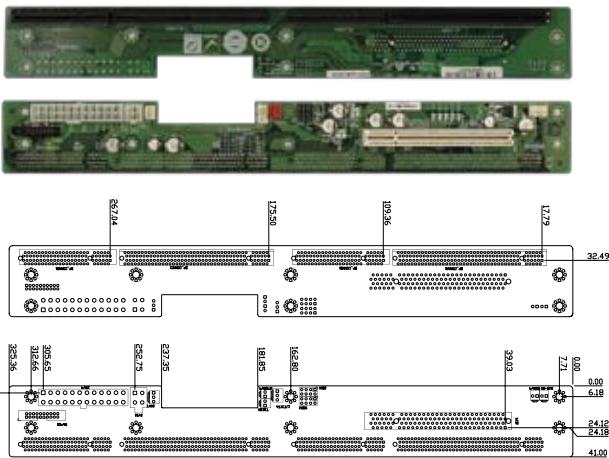


订购信息

- PE-2SD1-R10 2-slot backplane with one PCIe slot
- RACK-1150G-PE 1U full-size rack-mount chassis

PE-2SD2-R10

支持 1U 系统!

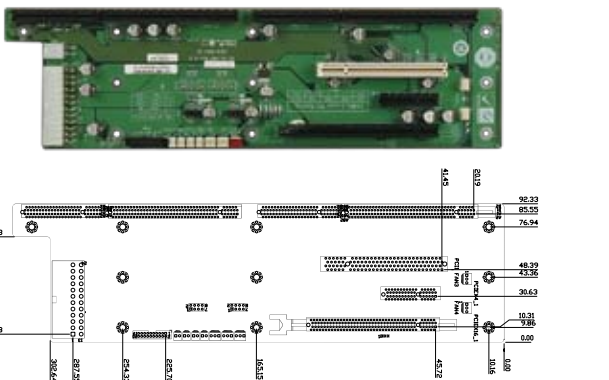


订购信息

- PE-2SD2-R10 2-slot backplane with one PCIe slot
- RACK-1150G-PE 1U full-size rack-mount chassis

PE-4S-R40

安装孔符合 PCI-4S

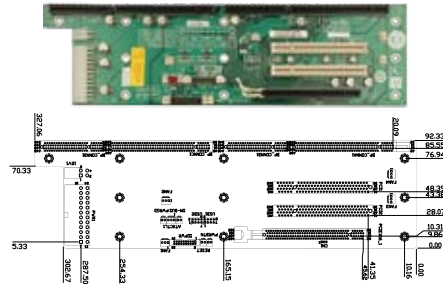


订购信息

- PE-4S-R40 4-slot backplane with one PCIe x16 slot, one PCIe x4 slot and one PCI slot

PE-4S2-R40

安装孔符合 PCI-4S

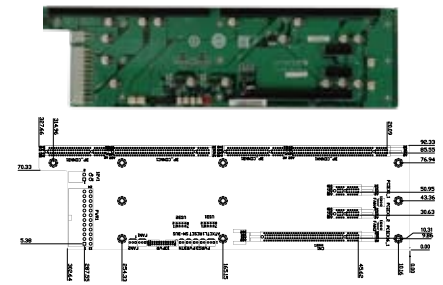


订购信息

- PE-4S2-R40 4-slot backplane with one PCIe x16 slot and two PCI slots

PE-4S3-R40

安装孔符合 PCI-4S

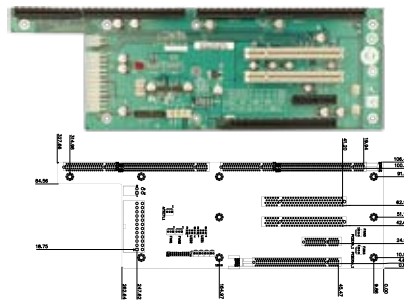


订购信息

- PE-4S3-R40 4-slot backplane with one PCIe x16 slot and two PCIe x1 slots.

PE-5S-R40

安装孔符合 PCI-5S

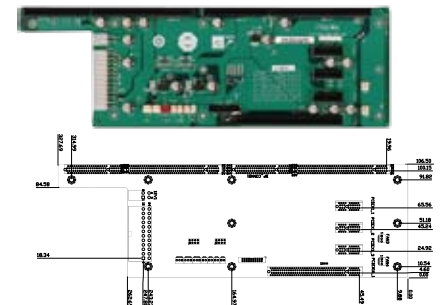


订购信息

- PE-5S-R40 5-slot backplane with one PCIe x16 slot, one PCIe x4 slot and two PCI slots
- RACK-500G 5U 5-slot full-size rack-mount chassis

PE-5S2-R40

安装孔符合 PCI-5S

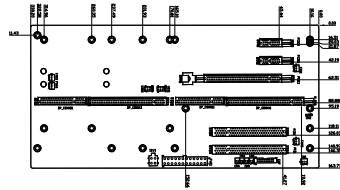


订购信息

- PE-5S2-R40 5-slot backplane with one PCIe x16 slot and three PCIe x1 slots
- RACK-500G 5U 5-slot full-size rack-mount chassis

PE-6S-R41

安装孔符合 PCI-7S

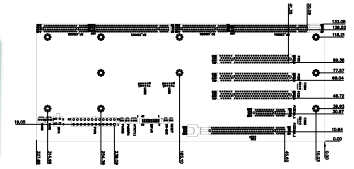


订购信息

- PE-6S-R41 6-slot backplane with one PCIe x16 slot, two PCIe x1 slots and two PCI slots
- RACK-305G 4U 14-slot full-size rack-mount chassis
- RACK-360G 4U 14-slot full-size rack-mount chassis
- RACK-3000G 4U 14-slot full-size rack-mount chassis
- PAC-1700G 7-slot full-size compact chassis
- PAC-125G 10-slot full-size compact chassis

PE-6S2-R40

安装孔符合 PCI-6S



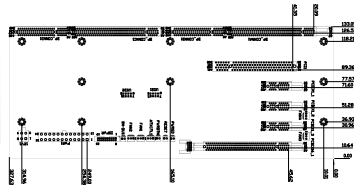
订购信息

- PE-6S2-R40 6-slot backplane with one PCIe x16 slot, one PCIe x4 slot and three PCI slots
- PAC-106G* 6-slot full-size compact chassis
- PAC-107G* 6-slot full-size compact chassis
- PAC-1000G 6-slot full-size compact chassis

*当使用一个 PCIe x16 附加卡时, 卡的长度不得超过 167mm 或 6.57inches.

PE-6S3-R40

安装孔符合 PCI-6S



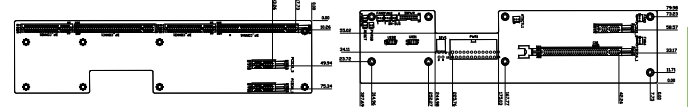
订购信息

- PE-6S3-R40 6-slot backplane with one PCIe x16 slot, three PCIe x1 slots and one PCI slot
- PAC-106G* 6-slot full-size compact chassis
- PAC-107G* 6-slot full-size compact chassis
- PAC-1000G 6-slot full-size compact chassis

*当使用一个 PCIe x16 附加卡时, 卡的长度不得超过 167mm 或 6.57inches.

PE-6SD-R40

安装孔符合 PCI-6SD



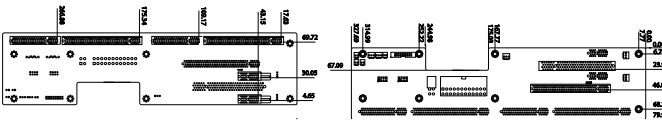
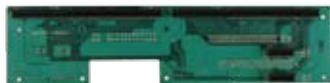
订购信息

- PE-6SD-R40 5-slot backplane with one PCIe x16 slot and three PCIe x1 slots

2U Type

PE-6SD2-R40

安装孔符合 PCI-6SD

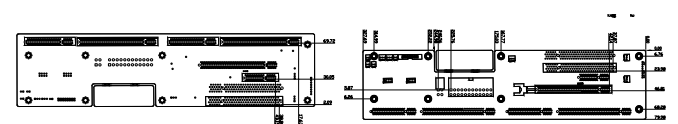


订购信息

- PE-6SD2-R40 5-slot backplane with one PCIe x16 slot, two PCIe x1 slots and one PCI slot

PE-6SD3-R40

安装孔符合 PCI-6SD

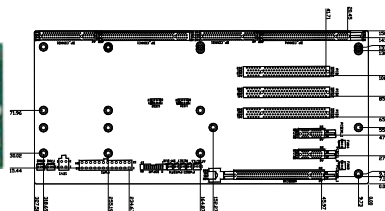


订购信息

- PE-6SD3-R40 5-slot backplane with one PCIe x16 slot, one PCIe x4 slots and two PCI slots

PE-7S-R40

安装孔符合 PCI-7S

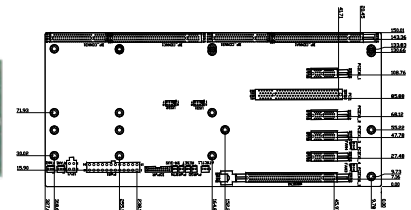


订购信息

- PE-7S-R40 7-slot backplane with one PCIe x16 slot, two PCIe x1 slots and three PCI slots
- PAC-1700G 7-slot full-size compact chassis

PE-7S2-R40

安装孔符合 PCI-7S



订购信息

- PE-7S2-R40 7-slot backplane with one PCIe x16 slot and four PCIe x1 slots and one PCI slot
- PAC-1700G 7-slot full-size compact chassis

1

工业电脑
解决方案

2

视频采集
解决方案

3

嵌入式系统
解决方案

4

工业数据
采集与控制

5

平板电脑
解决方案
概览

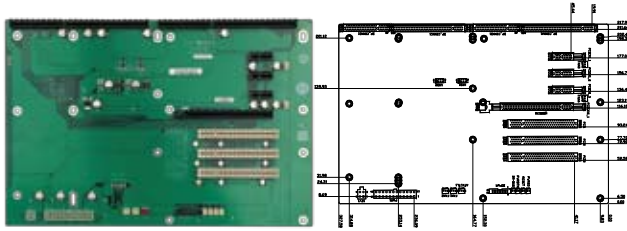
6

ORing
网络通讯

7

电源与外设

PE-8S-R40

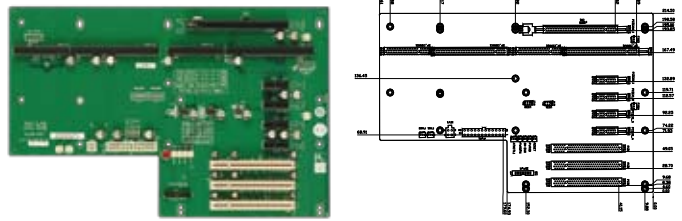


订购信息

- PE-8S-R40 8-slot backplane with one PCIe x16 slots, three PCIe x1 slots and three PCI slots
- PAC-125G 10-slot full-size compact chassis

PE-9S-R40

安装孔符合 PCI-10S2

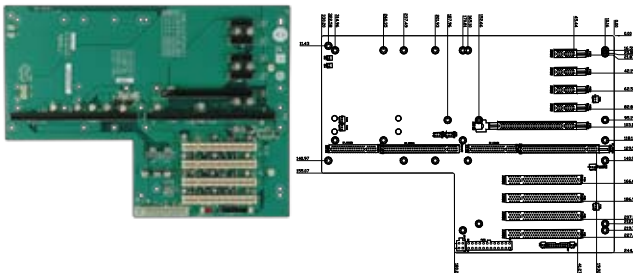


订购信息

- PE-9S-R40 9-slot backplane with one PCIe x16 slot, four PCIe x1 slots and three PCI slots

PE-10S-R40

安装孔符合 PCI-14S

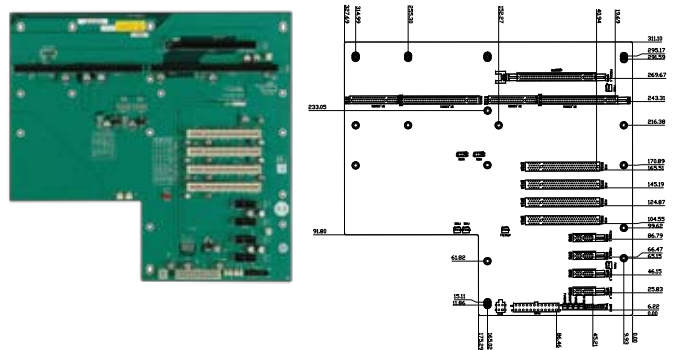


订购信息

- PE-10S-R40 10-slot backplane with one PCIe x16 slots four PCIe x1 slots and four PCI slots
- RACK-305G 4U 14-slot full-size rack-mount chassis
- RACK-360G 4U 14-slot full-size rack-mount chassis
- RACK-3000G 4U 14-slot full-size rack-mount chassis

PE-10S2-R40

安装孔符合 PCI-14S



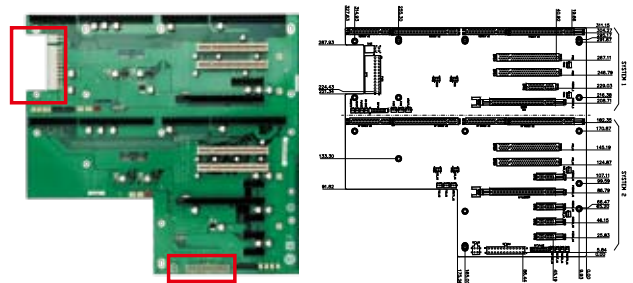
订购信息

- PE-10S2-R40 10-slot backplane with one PCIe x16 slot, four PCIe x1 slot and four PCI slots
- RACK-3000G 4U 14-slot full-size rack-mount chassis
- RACK-305G0 4U 14-slot full-size rack-mount chassis
- RACK-360G 4U 14-slot full-size rack-mount chassis

PE-13SD-R40

安装孔符合 PCI-14S

双系统



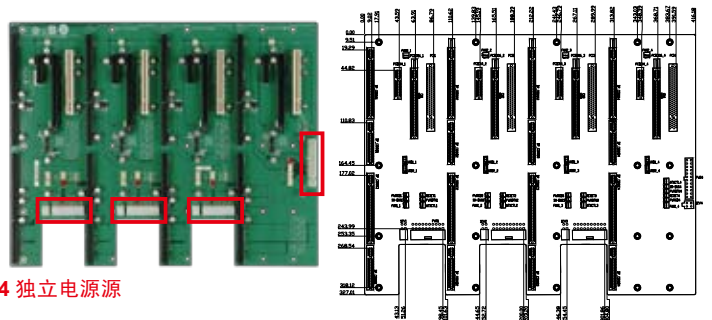
2 独立电源

订购信息

- PE-13SD-R40 13-slot backplane with two PCIe x 16 and one PCIe x 4 and four PCIe x 1 and four PCI slot.
- RACK-3000G 4U 14-slot full-size rack-mount chassis
- RACK-305G 4U 14-slot full-size rack-mount chassis
- RACK-360G 4U 14-slot full-size rack-mount chassis

PE-16SQ-R10

四系统



4 独立电源

订购信息

- PE-16SQ-R10 4-system backplane with each system having one PCIe x16 slot, one PCIe x4 slot and one PCI slot

1

工业电脑
解决方案

2

视频采集
解决方案

3

嵌入式系统
解决方案

4

工业数据
采集与控制

5

平板电脑
解决方案
概览

6

ORing
网络通讯

7

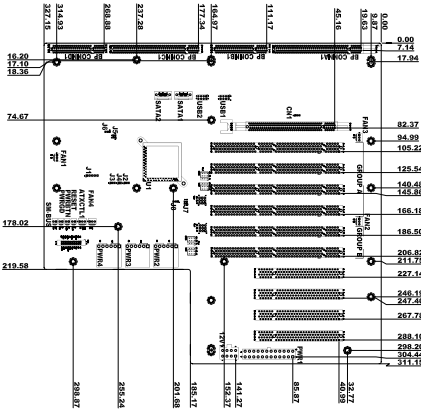
电源与外设

PXE-12S-R10

安装孔符合 PCI-14S



(PCIe to PCI-X Bridge)



订购信息

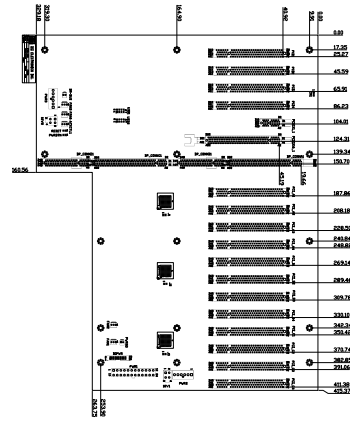
- PXE-12S-R10 12-slot backplane with one PCIe x16 slot, six PCI-X slots and four PCI slots
- RACK-3000G 4U 14-slot full-size rack-mount chassis
- RACK-305G 4U 14-slot full-size rack-mount chassis
- RACK-360G 4U 14-slot full-size rack-mount chassis

PXE-19S-R40

安装孔符合 PCI-19S



(PCIe to PCI Bridge)



订购信息

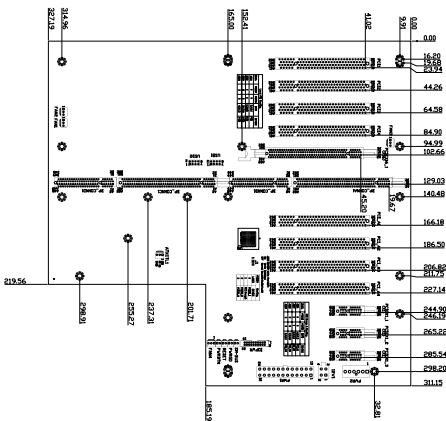
- PXE-19S-R40 19-slot backplane with one PCIe x16 slot, one PCIe x1 slot and sixteen PCI slots

PXE-13S-R42

安装孔符合 PCI-14S



(PCIe to PCI Bridge)



订购信息

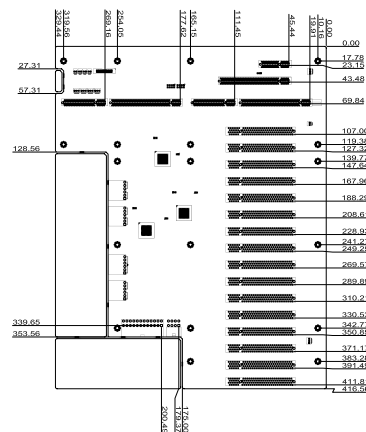
- PXE-13S-R42 13-slot backplane with one PCIe x16 slot, three PCIe x1 slots and eight PCI slots
- RACK-3000G 4U 14-slot full-size rack-mount chassis
- RACK-305G 4U 14-slot full-size rack-mount chassis
- RACK-360G 4U 14-slot full-size rack-mount chassis

PXE-19S2-R10

安装孔符合 PCI-19S



(PCIe to PCI Bridge)



订购信息

- PXE-19S2-R10 19-slot backplane with one PCIe x16 slot, one PCIe x1 slot and sixteen PCI slots

1

工业电脑
解决方案

2

视频采集
解决方案

3

嵌入式系统
解决方案

4

工业数据
采集与控制

5

平板电脑
解决方案
概览

6

ORing
网络通讯

7

电源与外设